



FOR LEASE

OFFICE SPACE

412 County Street, New Bedford, MA
Office Spaces, All-Inclusive

401 County Street, 2nd Fl, New Bedford, MA
2,800 SF Downtown Office Space

179 William Street, U7, New Bedford, MA
900 SF 2nd Floor Office in Historic Downtown

2031 Purchase Street, New Bedford, MA
3,200 SF on 1st Floor w/Parking Lot

60 Brigham Street, New Bedford, MA
3,656 SF Medical/Gen. Office Space on 2nd Fl

65 Brigham Street, New Bedford, MA
1,140 SF Medical Office Space

172 William Street, New Bedford, MA
1,600 SF Office Space Downtown

RETAIL SPACE

46 Marion Road, Mattapoisett, MA
1,400 SF Retail Space on Busy Rt. 6

161 Pope's Island, New Bedford, MA
10,000 SF in Waterfront District

4 Plaza Way, Fairhaven, MA
14,698 SF Retail/Office Space

2031 Purchase Street, New Bedford, MA
3,200 SF on 1st Floor w/Parking Lot

67-73 Huttleston Avenue, Fairhaven, MA
600 SF & 1,250 SF Retail Office Space

191-201 Pope's Island, New Bedford, MA
1,200-1,900 SF Retail/Office Spaces

331 State Road, Dartmouth, MA
3,000 SF in Busy Plaza w/10 Units

832 State Road, Dartmouth, MA
2,520 SF Retail, High Visibility

12 Sconticut Neck Rd, Fairhaven, MA
1,400 SF Retail Space in Busy Corner Plaza

Sarah's Way, Fairhaven, MA
2,000-2,640 SF Retail Spaces

INDUSTRIAL/WAREHOUSE

401 County Street, New Bedford, MA
860 SF Detached Storage Garage

211 Pope's Island, Suite 4, New Bedford, MA
1,400 SF Storage/Contractor Space

161 Pope's Island, New Bedford, MA
10,000 SF in Waterfront District

376 Nash Road, New Bedford, MA
17,000 SF Freezer and/or 8,000 SF Flex Space

Contact Us for Details at
(508) 990-4280

Should You Buy, Sell, Or Hold Commercial Real Estate Right Now?

With everything that's been going on in the world in recent months, this may make you pause and wonder what you should be doing with your commercial real estate. If you're in a good position to weather whatever storm may still be coming our way economically in the coming months, your best position may be to just sit tight, and maybe even keep your eyes open for good investment opportunities. However, if you begin feeling squeezed financially, you may want to sell some real estate to add some liquidity to your position.



No one can predict with certainty where everything will be heading economically for us in the months ahead, but with so many people being out of work, and with restaurants and other companies shutting down, it's not likely that we're going to be pulling out of this situation quickly. But still, we need to believe in commercial real estate, and believe in its strength over the long run.

So in keeping this in mind, if you're considering selling a property right now, or considering selling it at sometime within the coming months or years, would it perhaps be best to sell it right now? Or do you think you'll be able to get an even better price for the property in 2-3 years down the road? Because if we believe that the economy is going to continue on in getting worse, today's price may be better than what the price will be 2-3 years from now. But at the same time, if you believe that the economy will be better in 2-3 years, and you have no specific reason to sell right now, then it will be better for you to wait and ride out the storm that we're currently facing.

Keeping all of this in mind, when it comes to buying, do you believe you can obtain your best pricing right now? Or do you believe that better investment opportunities will be coming your way in the months and years ahead? Because in reality, you just never know when you could be presented that one investment opportunity that is simply too good to pass on, and when that opportunity appears, you'll definitely want to pull the trigger on it right away.

So the decision to buy, sell, or hold your commercial real estate right now depends in many ways on both how you're doing financially, and on where you see the economy progressing to within the months and years ahead. Either way, you'll need to remain informed, up-to-date, and interpret all of the market information correctly, and whenever you believe that I can help you to accomplish this, please give me a call.



Non-Disturbance Agreement

The tenant signs this to prevent eviction if the property owner does not pay its mortgage.

SOLD

RETAIL

185195 N Main St, Mansfield, MA \$252,000
270 Huttleston Ave, Fairhaven, MA \$1,600,000
128 County St, New Bedford, MA \$250,000
2264 GAR Hwy, Swansea, MA \$850,000
400 Colony Pl, Plymouth, MA \$4,935,574
70 Main St, Lakeville, MA \$355,000
1441 Warwick Ave, Warwick, RI \$700,000
145 Boon St, Narragansett, RI \$1,400,000
87 Shore Dr, Johnston, RI \$675,000
562 Washington St, Abington, MA \$115,000

OFFICE

401 County St, New Bedford, MA \$370,000
666 Pleasant St, Brockton, MA \$265,000
851 Main St, Warren, RI \$1,200,000
100 Copeland Dr U:2, Mansfield, MA \$100,000
513 Washington St, Abington, MA \$270,870
1-A Fuller St, Carver, MA \$410,000

MULTI UNIT

234-236 Hemlock St, New Bedford, MA \$500,000
493 Belleville Ave, New Bedford, MA \$245,000
995-997 Atwells Ave, Providence, RI \$3,061,500
651-663 Public St, Providence, RI \$3,061,500
19 Hamlet St, Woonsocket, RI \$2,502,680
461 Elmwood Ave, Providence, RI \$2,099,536
453-457 Elmwood Ave, Providence, RI \$1,918,000
442 Smithfield Ave, Pawtucket, RI \$1,702,000
515 E School St, Woonsocket, RI \$1,543,101

INDUSTRIAL

305 Constitutional Dr, Taunton, MA \$3,000,000
280 Franklin St, Bristol, RI \$1,600,000

LAND

2095 Kingstown Rd, Wakefield, MA \$575,000
1305 Kingston Rd, S Kingstown, RI \$80,000
2725 Cranberry Hwy, Wareham, MA \$124,200

HOSPITALITY

3338 E Main Rd, Portsmouth, RI \$495,000

For More Information on
Buying or Selling Your Property,
Call Us at (508) 990-4280

Environmentally Friendly Travel Tips

Wherever you are heading to on vacation, it is your duty to ensure that the nature of your eventual destination is preserved, and not damaged by your visit.

Eco sustainability is of vital importance to preserving crucial ecosystems and endangered wildlife, and the good news is that by just making small alterations to your lifestyle, you can make a big impact on environmental preservation.



While flying in an airplane may be necessary, research the many travel alternatives that are available on sea and on land. Renting an RV is a great way of unplugging from everyday life, while allowing you full control over your own garbage.

Other environmentally friendly travel practices you can engage in include keeping luggage light, going paper-free, and reading books digitally on a phone to avoid the excess weight of carrying books around on your trip.

We all want to do what's best to preserve our planet, and oftentimes giving a little forethought to our travels can help us to do our part to help the environment.

Telling Stories

Communication is one of the most important ways in which a family can become and stay happy, and telling each other stories about your day is one of the simplest ways to accomplish this.

Parents should always take the time to not only ask their children to share any stories they have from their day when they come home from school, but to also have a story to share with them, too.



Children have to be the first priority when you come home from work, and it is important to have something to share to connect with them, even if it is just a small vignette, rather than an epic tale.

Having a fun story to tell on a regular basis gives children something to look forward to when they come home, and staving off boredom in family life is a crucial step to ensuring that a family is able to remain both functional, and happy.

FOR SALE!

22,200 SF Steel Bldg w/ Parking Lot
3.08 Acre Lot in Opportunity Zone
\$1.7 M



Fairhaven, MA

Call Lori for Details! (508) 736-2387 or lorinery@comcast.net

Don't Miss These FOR SALE Opportunities!



NEW BEDFORD

38 Elm Street & WS Bethel Street
8,136 SF Historic Office Building
Built in 1896 and expertly restored offering 2 floors of office space with twenty rooms, 18+ parking spots.
\$669,000



TAUNTON

12 Porter Street
20,236 SF Manufacturing Building
Redevelopment opportunity zoned Urban Residential. Plenty of parking.
\$275,000

Teaching Children Resilience

The world is getting more stressful all the time, and 2020 has proven to be a particularly difficult year for everyone, including young people.

However, parents can help their children to become more resilient.

Young people need to be in a supportive environment and be able to adapt to new circumstances in order to cope with stress, and there are some strategies that can help to achieve this.

A child can get support and keep their emotional balance whenever they maintain a connection with a number of good friends, as well as adults they trust, including non-family members.

It is also helpful to encourage young people to focus on their strengths and interests during stressful times, and to talk about how they can use their strengths every day. It is also a good idea to encourage children to try to develop new strengths that will make them more resilient to the tumultuous nature of life in the 21st century.



Horror Movie Trivia

Scary movies have been with us as long as there has been cinema, and scary stories have been with us even longer. But there are many fascinating trivia facts associated with the often controversial, but much-loved genre. The Academy Awards has never been a big lover of the horror genre, but in 1974 it was the infamous horror film "The Exorcist" that became the first such film to receive major recognition, scoring as many as ten Oscar nominations, including for Best Supporting Actress for 15 year-old Linda Blair as the possessed Regan. It seems inconceivable today that anyone other than Robert Englund could have played dream-dwelling monster Freddy Krueger in the "Nightmare on Elm Street" series, but in fact director Wes Craven's first choice for the role was accomplished British actor David Warner, well-known for such films as "Time Bandits", and as the doomed photographer in another horror classic, the original 1976's "The Omen". However, Warner had other commitments, and the role definitely made Englund a star. The original title for "Scream" was "Scary Movie", a title eventually adopted for a film parodying horror movies in general, and "Scream" in particular.

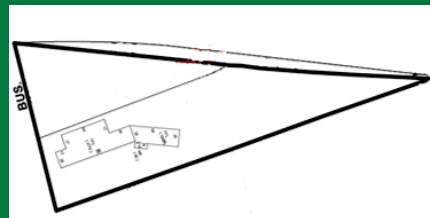
FOR SALE

NEW BEDFORD



1,760 SF Retail/Office Bldg on High Traffic Rt. - \$182,000

NEW BEDFORD



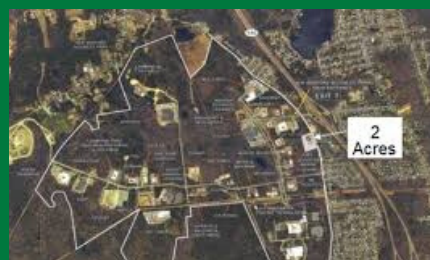
3,865 SF Retail Bldg w/ Parking Lot on Busy Road - \$630,000

NEW BEDFORD



3,945 SF Commercial Building on High Traffic Corner - \$425,000

NEW BEDFORD



2 Acres Corner Lot
New Bedford Business Park
Entrance - \$200,000

NEW BEDFORD



1,269 SF Corner Lot
Retail /Office Bldg - \$165,000



**COASTAL
COMMERCIAL**
Real Estate

Commercial Real Estate

news and more

July 2020

U.S. POSTAGE
PAID
NEW BEDFORD, MA
PERMIT NO. 118
ZIP CODE 02740

Coastal Commercial Real Estate
700 Pleasant Street, Suite 330
New Bedford, MA 02740
508-990-4280
www.coastalcommercialre.com



Follow Us!



Lori A. Nery®

CBB, LMS, GRI, Vice-President



LoriNery@comcast.net
508-736-2387

Richard Stang, Esq.



R.Stang@nerycorp.com
508-990-4280

Justin Grolley CBI, MBA



J.Grolley@nerycorp.com
508-965-8683

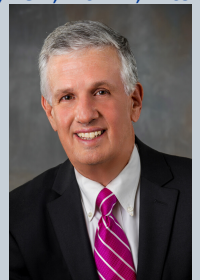
Joe Pinto®



J.Pinto@nerycorp.com
774-400-9532

Kevin A. Nery

CBB, LCBI, M&AMI, President



K.Nery@nerycorp.com
508-990-4280

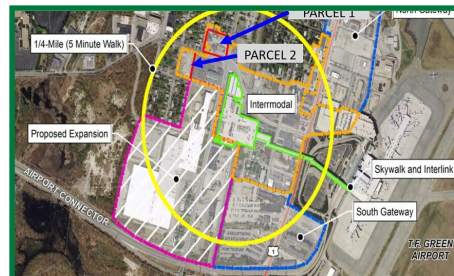
FOR SALE

WARWICK, RI



1.59 Acres near Airport- 7 Lots
\$4M

WARWICK, RI



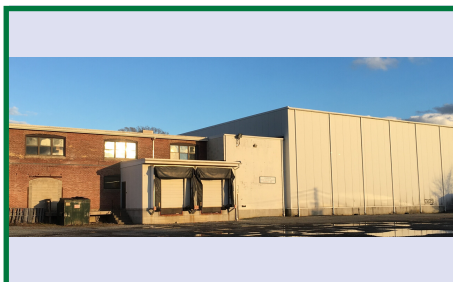
1.61 Acres Lot Near Airport
\$2M

SWANSEA, MA



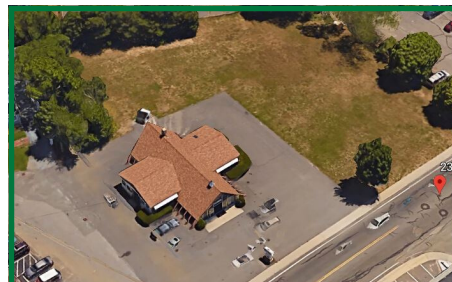
2.89 Acres Commercial/Industrial Lot
\$1.5M

NEW BEDFORD, MA



17,000 SF State-of-the-Art Cold
Storage & 42,609 SF Flex Warehouse
\$2.5M

HYANNIS, MA



.94 Acres Retail/Office or
Development in Prime Location!
\$1.1M

NEW BEDFORD, MA



1,760 SF Retail/Office
on High Traffic Route 6
\$275,000